



NEWS & VIEWS

Kindness, Honesty, Confidence, Perseverance, Safety

Headteacher: Miss V Townsend



Headteacher's Comment:

We'd like to begin this week's newsletter with some exciting news – Miss Bulley has now begun her maternity leave! I'm sure you will all join me in wishing her all the very best as she prepares to welcome her new baby. We look forward to hearing her happy news soon!

We are writing to ask for your continued support in ensuring that drop-off and pick-up times at Kelvedon Hatch remain safe and respectful for all members of our community. We have received concerns from local residents regarding unsafe parking during the start and end of the school day. In some cases, cars have been parked on double yellow lines or on both sides of the road, making it extremely difficult for residents to access their homes and potentially preventing emergency vehicles from getting through if needed. The safety of our children is our highest priority, and it is vital that we maintain clear access around the school site at all times. Please can we ask you to park a short distance from the school and then walk the final part of the journey. This helps reduce congestion and promotes independence. Thank you for your support with protecting our children. We therefore ask all parents and carers to please:

- Park considerately and legally at all times.
- Avoid blocking driveways or parking on yellow lines.
- Keep access routes clear for emergency vehicles.

This week we enjoyed another fantastic Family Feast, this time with Year 4. These special events are a wonderful opportunity for us to come together as a community and share a meal. A big thank you to everyone who was able to join us – it was lovely to see so many familiar faces.

Well done to Year 1 for their brilliant class assembly! We are incredibly proud of all they have achieved this year. As we approach the end of term, they continue to be fantastic ambassadors for learning – showing enthusiasm, curiosity, and kindness every day.

We have had lots of visitors over the last few weeks. Year 5 had a fantastic time taking part in a Tudor workshop last week — it was an enjoyable, hands-on experience that brought their history learning to life! This week, we had the pleasure of welcoming Rock Steady Music School into our school for an exciting and interactive assembly. The children thoroughly enjoyed the experience, which was full of energy, music, and fun! Rock Steady provides in-school rock band lessons, giving children the chance to learn instruments like drums, guitar, keyboard, and vocals, all while building confidence and teamwork. The assembly gave a fantastic introduction to what Rock Steady offers, and it was wonderful to see the children so engaged and inspired by the music. If your child is interested in taking up lessons, please follow the link to our community page for more information. We were also thrilled to welcome Team Kinetix into school this week! The children had an amazing time learning about free running (parkour) – an exciting way to develop confidence, agility, and teamwork through physical movement. It was a brilliant way to inspire a love of movement and active lifestyles.

This week, our Year 6 children visited their new secondary schools for transition days — we hope they enjoyed the experience and are feeling excited and confident about this next big step in their journey.

This week we also welcomed our new Reception children for their Teddy Bears' Picnic — they were a joy to meet, full of smiles and excitement, and we're so looking forward to them joining our school family in September.

And finally, a magical moment for Reception as they released their butterflies into the wild! After weeks of observing the caterpillars grow and transform, the children (and the whole school!) watched in awe as the butterflies took flight. It was a truly memorable experience that brought learning to life in the most beautiful way.

Thank you, as always, for your continued support. Have a lovely weekend.



Diary Dates

Wednesday 2 & 3 July – Year 6 Bikeability

Thursday 3 July – Reception Starters stay & play

Thursday 3 July – Year 5 family feast

Monday 7 July – Sports Day and Picnic

Monday 14 -18 – Mersea Year 6 residential

Monday 21 – Summer Concert

**Please note that some dates unavoidably may change.
Apologies if this does happen.**



DISCOVERY
EDUCATIONAL TRUST

Chief Executive Officer: Mr R Duff

Kelvedon Hatch C.P School is proud to be part of the Discovery Educational Trust



www.kelvedonhatch.essex.sch.uk



[@HatchCps](https://twitter.com/HatchCps)



office@kelvedonhatch.essex.sch.uk



Weekly Attendance

Weekly Attendance

Class	Reception	Year 1	Year 2	Year 3	Year 4	Year 5	Year 6	Whole School
Attendance	100%	98.7%	89.5%	93%	90.95	100%	98.5%	95.7%

1 st	2 nd	3 rd
Reception & Year 5	Year 1	Year 6



Yearly Attendance

Yearly Attendance – from 3 September

Class	Reception	Year 1	Year 2	Year 3	Year 4	Year 5	Year 6	Whole School
Attendance	95.2%	94.6%	93.6%	91.4%	92.1%	95.3%	93.5%	93.6%

1 st	2 nd	3 rd
Year 5	Reception	Year 1



Stars of the week

Reception	Year 1	Year 2	Year 3	Year 4	Year 5	Year 6
Blake	Sonny	Josie	Evie	Ghaniyyah	Inaaya	



Miss Townsend's Headteachers Award

This week's award goes to Noa in Year 1 who is a true role model — he is always polite, kind, and respectful to everyone around him. Well done Noa.



Reminders

If your child is absent, please ensure you leave a reason as to why they are absent. If you are unsure if your child should be at school, please check the guidance from the [NHS](#).

Please make sure the children are wearing the correct uniform, the website outlines what the children should be wearing. Please remember we do not allow jewellery in school. Thank you



DISCOVERY
EDUCATIONAL TRUST

Chief Executive Officer: Mr R Duff

Kelvedon Hatch C.P School is proud to be part of the Discovery Educational Trust



www.kelvedonhatch.essex.sch.uk



@HatchCps

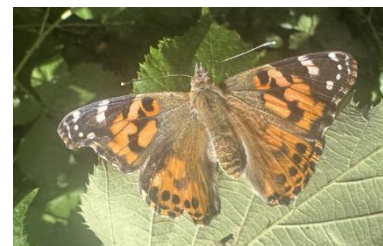


office@kelvedonhatch.essex.sch.uk



Reading at Home

Class	This table shows the number of children and percentages of children that have read this week.						Percentage reading 4 times or more
	Number of times children have read this week						
	0	1	2	3	4	5 or more	
Reception	1 (8%)	1 (8%)	3 (23%)	3 (23%)		5 (38%)	5 (38%)
Year 1		2 (9%)	2 (9%)	3 (12%)		16 (70%)	16 (70%)
Year 2	2 (9%)	3 (13%)	3 (13%)	3 (13%)	5 (22%)	7 (30%)	12 (52%)
Year 3	1 (4%)	8 (32%)	2 (8%)	2 (8%)	5 (20%)	7 (28%)	12 (48%)
Year 4		3 (16%)	1(5%)	3(16%)	2(10%)	10(53%)	12 (63%)
Year 5	9 (31%)	2 (7%)	5 (17%)	4 (14%)	2 (7%)	7 (24%)	9 (31%)
Year 6	1 (5%)				5 (25%)	14 (70%)	19 (95%)



DISCOVERY
EDUCATIONAL TRUST

Chief Executive Officer: Mr R Duff

Kelvedon Hatch C.P School is proud to be part of the Discovery Educational Trust



www.kelvedonhatch.essex.sch.uk



@HatchCps



office@kelvedonhatch.essex.sch.uk