



Friday 14 November 2025

NEWS & VIEWS

Kindness, Honesty, Confidence, Perseverance, Safety

Headteacher: Miss V Townsend



Headteacher's Comment:

It has been wonderful returning to KHCPs this week and seeing the children, staff, and parents again. I have enjoyed sharing some information about our visit to China and look forward to showing the children some photos and items from the trip.

This has been a very busy week, filled with school visits, sporting events, and today, the children arrived in spots or pyjamas to mark Anti-Bullying Week and Children in Need. It was wonderful to see them taking part so enthusiastically and reflecting so positively in a fantastic whole-school workshop led by the brilliant Don Rae. The children explored the theme of anti-bullying through dance, gaining not only a fun and energetic experience but also a deeper understanding of the importance of kindness and respect. The children also took part in a virtual Poetry Party with Michael Rosen this week. They thoroughly enjoyed listening to his lively performances and joining in with the poems, there was plenty of enjoyment had by all!

This week we also marked Remembrance Day, and our Year 6 children visited the war memorial with Reverend Julie. Members of the Rotary Club and others from the village commented on how well-behaved and respectful the children were, as well as how thoughtful their questions were. Reception and Year 5 took part in a Road Safety workshop, learning how to cross the road safely and how to look out for hazards and danger. Year 6 also joined a local community project called 'Kinder Essex', run by Essex County Council alongside other schools in the area. They created artwork to celebrate and promote World Kindness Day, and their pieces are now on display in Brentwood Library and the Baytree Centre!

We also celebrated 60 children achieving 100% attendance with a special pizza party. It was a wonderful way to recognise their commitment to being in school every day, and lovely to see how proud they were of their achievement. The celebration created a real sense of excitement and encouraged everyone to keep striving for excellent attendance!

Last week, as you know, our choir had the fantastic opportunity to perform at Hamleys on Regent Street in London during the unveiling of their Christmas windows, please follow these links to read the articles, ([Essex-TV](#), [Toyworld](#))

It is lovely to see so many children reading regularly, and we were thrilled to celebrate several children achieving their Bronze Owl this week. A big well done to Oscar in Reception, Joseph in Year 4 and Isabelle in Year 5! Please continue to read with your children at home. Reading is incredibly important, it builds confidence, develops vocabulary, strengthens imagination, and supports learning across all subjects. Just a few minutes each day makes a real difference. We understand there has been some confusion around the Reading Owls. To achieve a Bronze award, children need 70 reads, and this is monitored and overseen by teachers using the information recorded in the children's reading records and in class.

A reminder for parents of children to apply for a Reception school place for the academic year that starts in September 2026. The statutory national closing date for applications is 15 January 2026. Applications can be made online via www.essex.gov.uk/admissions. Even if a parent already has a sibling at the school, they need to apply if they have a child due to start Reception next September.

We are delighted to welcome Miss King to our team as a Midday Assistant, the children have already begun to build positive relationships with her.

Wishing you all a very happy and restful weekend.



Diary Dates

Tuesday 18 November – One Plan Meetings

Friday 21 November – Year 5 trip to Southend Planetarium

Monday 24 November – Flu immunisations for all year groups

Friday 28 November – Year 6 Basketball Festival

Friday 5 December – The Wizard of Oz pantomime

Wednesday 10 December – EYFS & KS1 nativity

Friday 12 December – Year 6 start Forest School

Please note that some dates unavoidably may change.

Apologies if this does happen.



DISCOVERY
EDUCATIONAL TRUST

Chief Executive Officer: Mr R Duff

Kelvedon Hatch C.P School is proud to be part of the Discovery Educational Trust



www.kelvedonhatch.essex.sch.uk



[@HatchCps](https://twitter.com/HatchCps)



office@kelvedonhatch.essex.sch.uk



Weekly Attendance

Weekly Attendance

Class	Reception	Year 1	Year 2	Year 3	Year 4	Year 5	Year 6	Whole School
Attendance	98.8%	100%	94.8%	92.6%	93.6%	89.5%	91.7%	93.9%

1 st	2 nd	3 rd
Year 1	Reception	Year 2



Yearly Attendance

Yearly Attendance – from 1 September

Class	Reception	Year 1	Year 2	Year 3	Year 4	Year 5	Year 6	Whole School
Attendance	98.5%	97.1%	98.6%	94.5%	91.9%	93.8%	94.2%	95.2%

1 st	2 nd	3 rd
Year 2	Reception	Year 1



Stars of the week

Reception	Year 1	Year 2	Year 3	Year 4	Year 5	Year 6
Arthy	Noah	Alfie	Frankie	Max	Boston	Mary



Miss Townsend's Headteachers Award

This week's Headteacher Award goes to Oliver M in Year 3 for taking great pride in all he does. Keep up the good work Ollie!



Important reminders

PE kits should be left in school all week as sometimes the day of lessons need to change or the children may have additional workshops booked in for which they require their kit. These will be sent home at the end of each half term.



DISCOVERY
EDUCATIONAL TRUST

Chief Executive Officer: Mr R Duff

Kelvedon Hatch C.P School is proud to be part of the Discovery Educational Trust



www.kelvedonhatch.essex.sch.uk



@HatchCps



office@kelvedonhatch.essex.sch.uk



Reading at Home

Class	This table shows the number of children and percentages of children that have read this week. Number of times children have read this week						Percentage reading 4 times or more
	0	1	2	3	4	5 or more	
Reception		3 (20%)		3 (20%)	2 (13%)	7 (47%)	9 (60%)
Year 1		1 (6%)	1 (6%)	1 (6%)	3 (20%)	6 (40%)	9 (60%)
Year 2	1 (4%)	2 (9%)	1 (4%)	2 (9%)	2 (9%)	15 (65%)	17 (74%)
Year 3	1 (4%)	1 (4%)		5 (22%)	6 (26%)	10 (43%)	16 (69%)
Year 4	1 (4%)	4 (15%)	1 (4%)	3 (11%)	6 (22%)	12 (44%)	18 (66%)
Year 5			2 (10%)	1 (5%)	5 (25%)	12 (60%)	17 (85%)
Year 6			1 (3.5%)	1 (3.5%)	17 (61%)	9 (32%)	26 (93%)
Well done to Year 6, 93% of their pupils read four times or more this week.							



DISCOVERY
EDUCATIONAL TRUST

Chief Executive Officer: Mr R Duff

Kelvedon Hatch C.P School is proud to be part of the Discovery Educational Trust



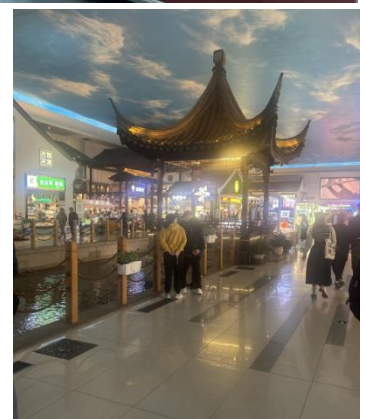
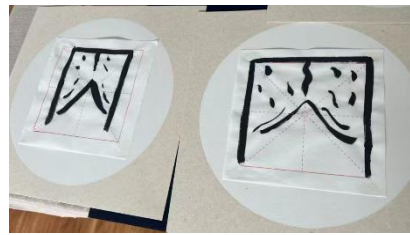
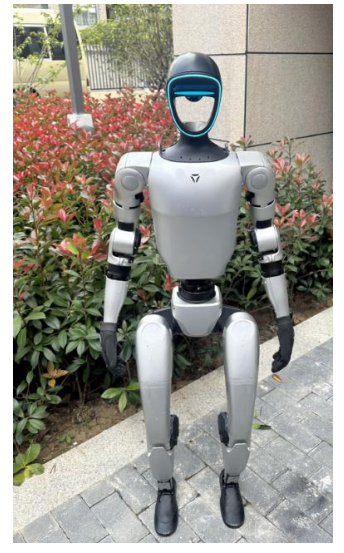
www.kelvedonhatch.essex.sch.uk



@HatchCps



office@kelvedonhatch.essex.sch.uk



DISCOVERY
EDUCATIONAL TRUST

Chief Executive Officer: Mr R Duff

Kelvedon Hatch C.P School is proud to be part of the Discovery Educational Trust



www.kelvedonhatch.essex.sch.uk



@HatchCps



office@kelvedonhatch.essex.sch.uk